

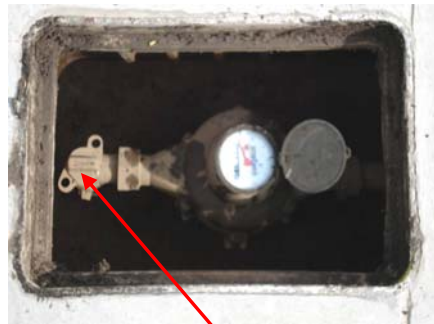
## **City of Clovis Water Dept.** **Frequently Asked Questions**

### **1.) How do I shut off my water in case of an emergency or for repairs?**

*Answer: There are usually two locations where water can be shut off. The first place is at the meter angle valve located in the meter box.*



Meter Box



Meter Angle Valve

- *This valve should be shut off by City Water Dept. personnel to release the home owner of liability to any damages that may occur while opening or closing the valve. To schedule water shut offs or for emergencies, call 324-2600.*

*The other location is usually in the front of the house near the faucet or on the side of the house near the front. (Except in Tarpey, where they are sometimes located in the back yard)*

*This valve is referred to as the “gate valve” or the “house valve”. They either have wheel or lever type shut off. The wheel type is shut off by turning the wheel clockwise. The lever type is shut off by moving the lever until it is perpendicular to the pipe. This should be done slowly to prevent water hammer. The house valve will shut off all the water in the house. The irrigation valve is sometimes in this area also. This valve will normally shut off all the irrigation water.*



Irrigation Valve

House Valve or Gate Valve

