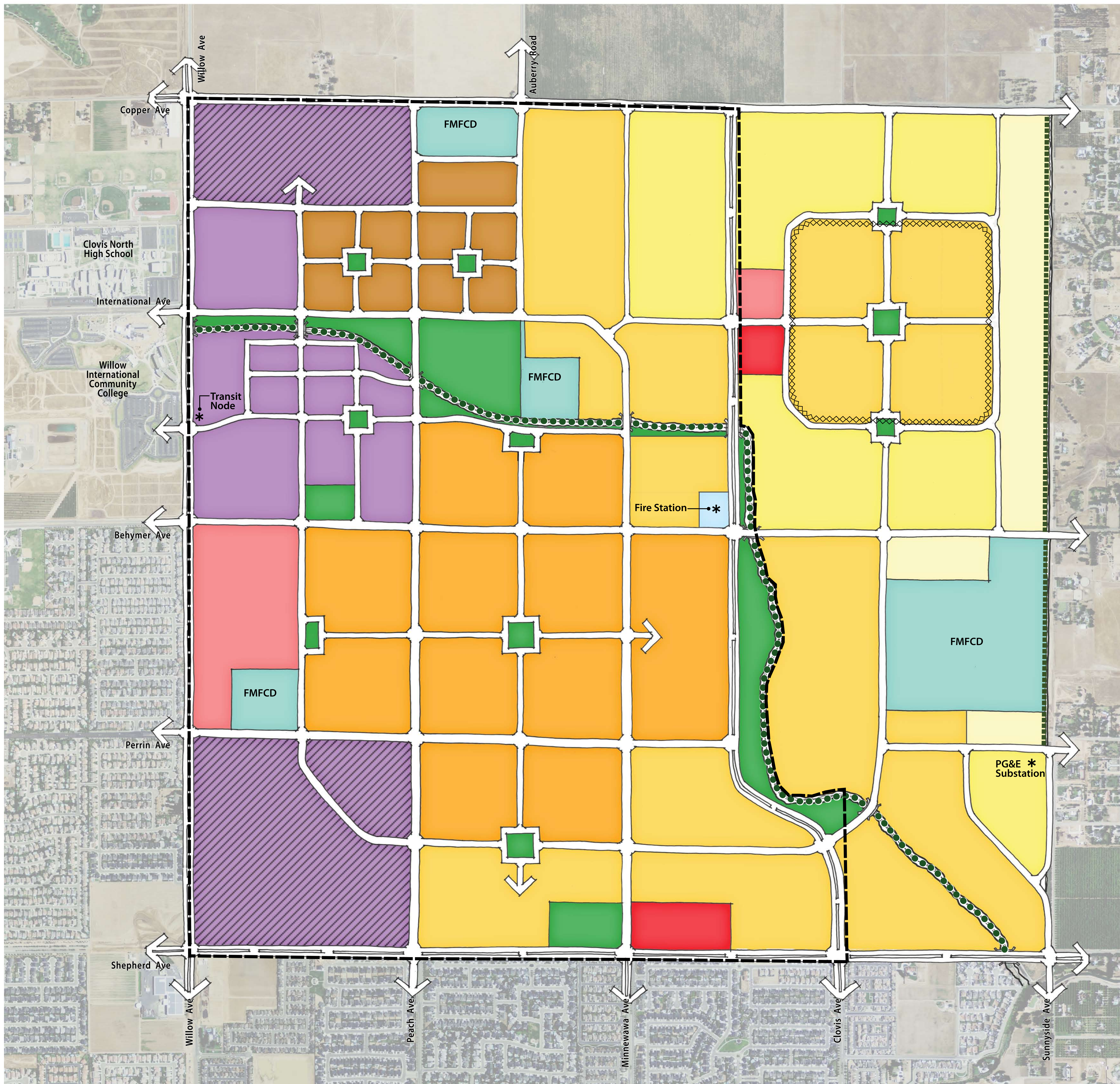


NORTHWEST URBAN CENTER DRAFT LAND USE DIAGRAM



- Very Low Density Residential (0.5-2 du/ac)
- Low Density Residential (2-4 du/ac)
- Medium Density Residential (4-7 du/ac)
- Medium High Density Residential (7-15 du/ac)
- High Density Residential (15-25 du/ac)
- Very High Density Residential (25-43 du/ac)
- Mixed Use (7-25 du/ac)
- Master Planned Community
- Commercial
- Office
- Park
- Public Facilities
- Schools
- Water Basin (Fresno Metropolitan Flood Control District)
- Enterprise Canal Trail
- Sphere of Influence Boundary
- PG&E Easement
- Potential Master Planned Community (4-7 du/ac)

Note: Additional elementary schools are anticipated in this area, their actual location will be depicted when property is purchased by the CUSD.